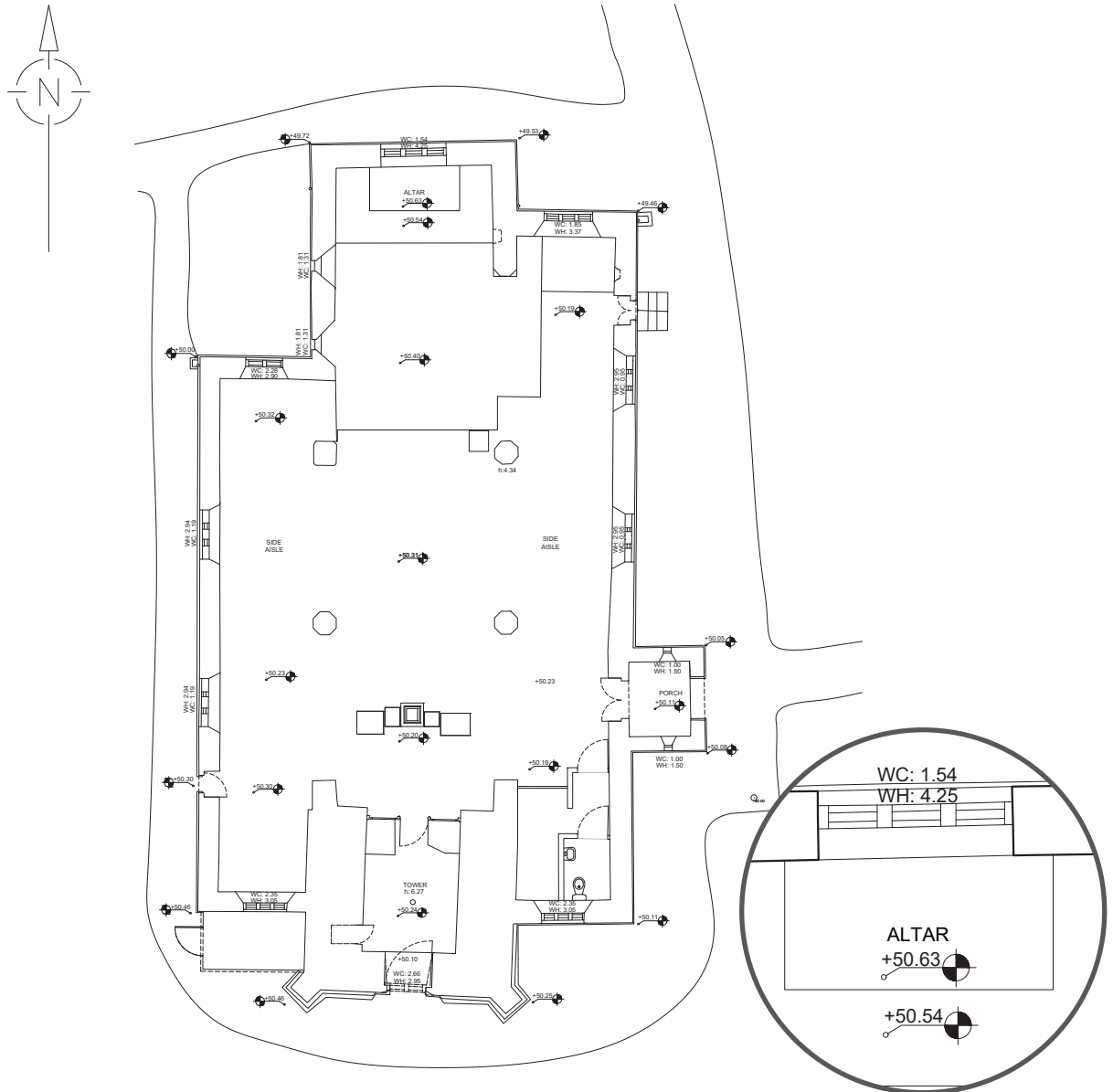


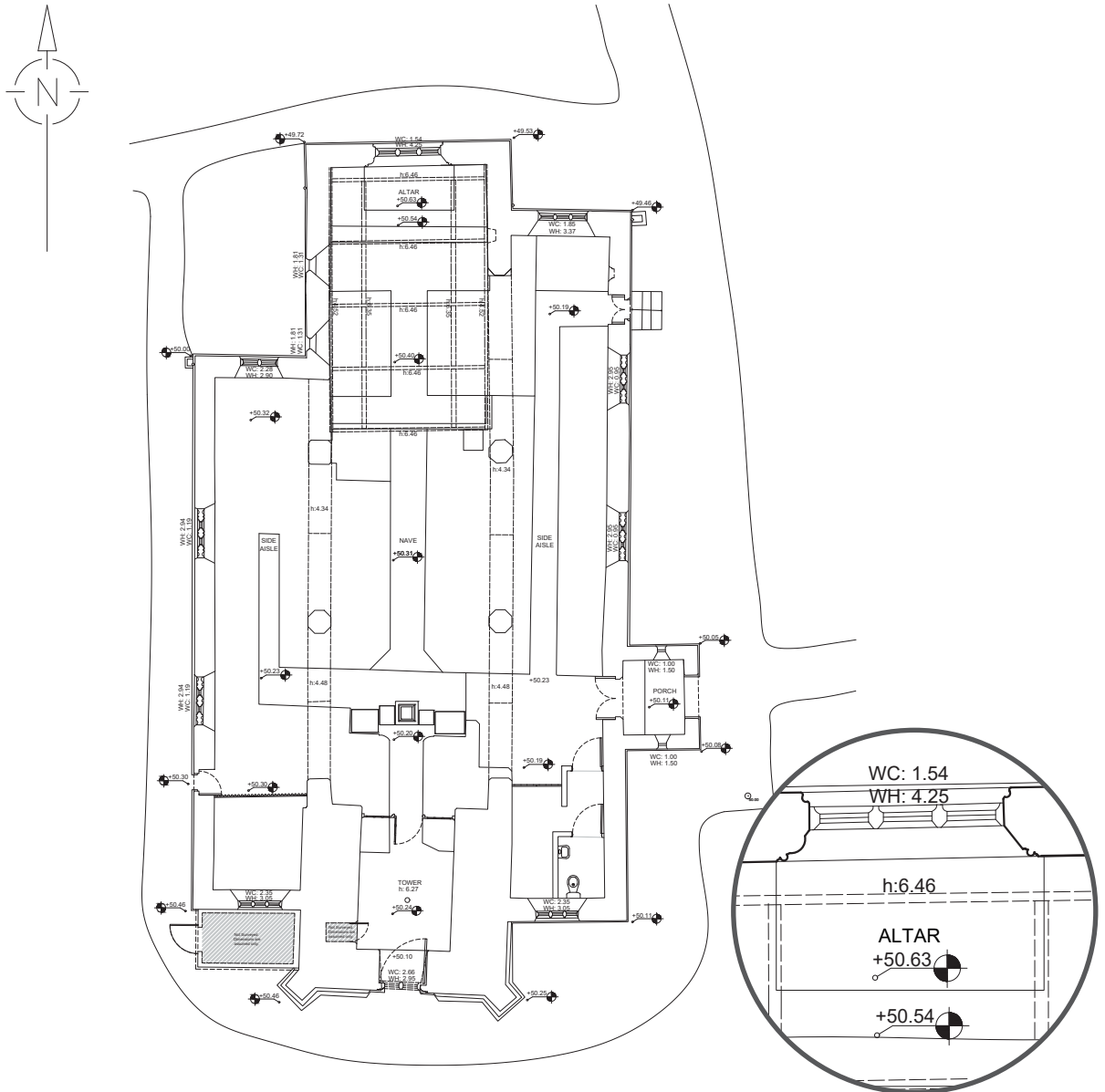
# Level of Details

Specification Guide for 2D CAD Drawings



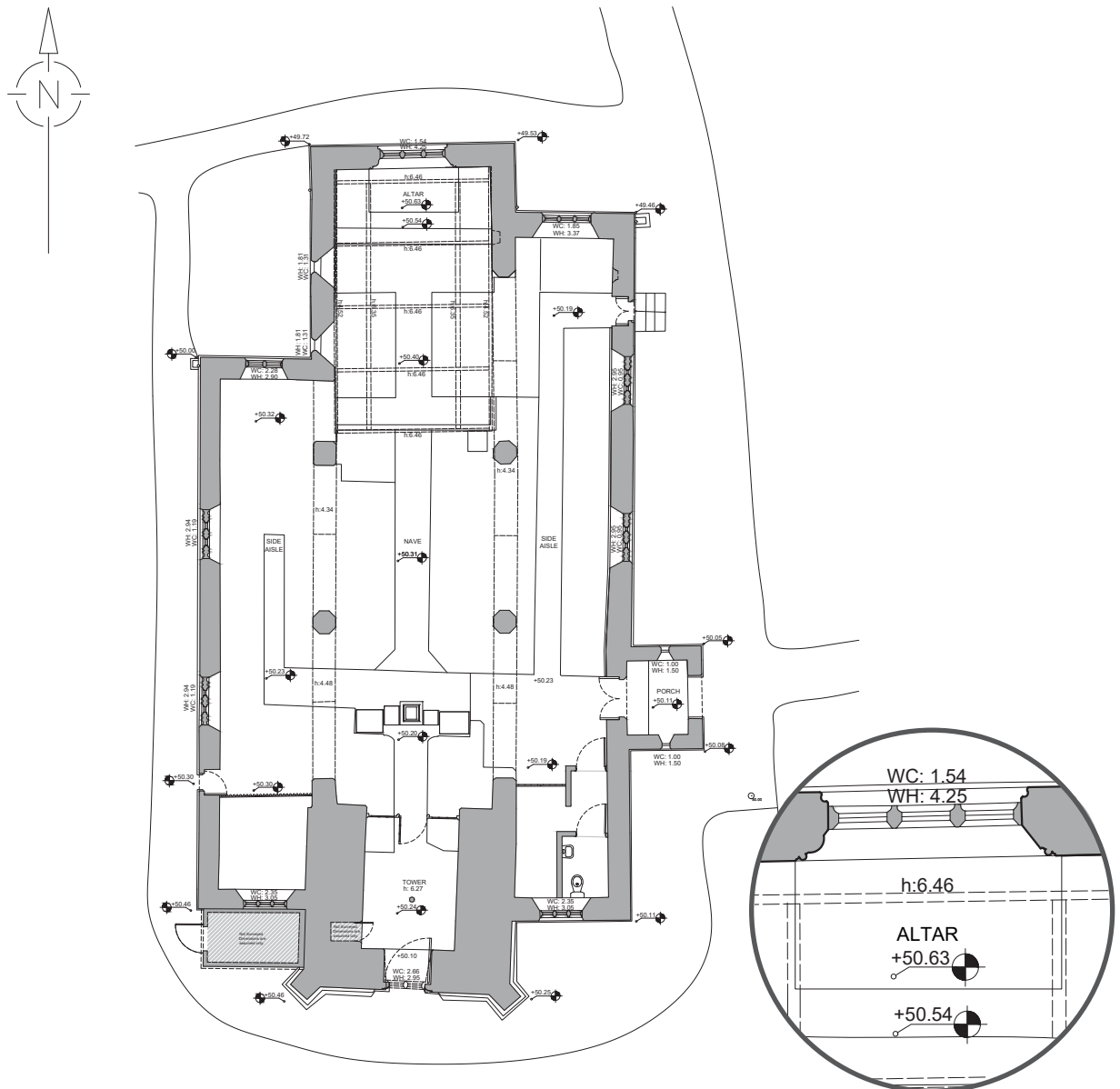
## Level 1 - Basic Architecture

- These floor plans show all the elements in basic outlines.
- The structural elements are represented schematically.
- Doors and windows are represented as openings, without details.
- Includes the outline of stairs, steps and railings schematically.
- Ornamental elements and small-scale details are not included in the drawing.
- We draw simplified silhouettes of complex architectural elements.
- Materials and finishes are not identified.
- Names of spaces are identified with annotations for measurements and levels.



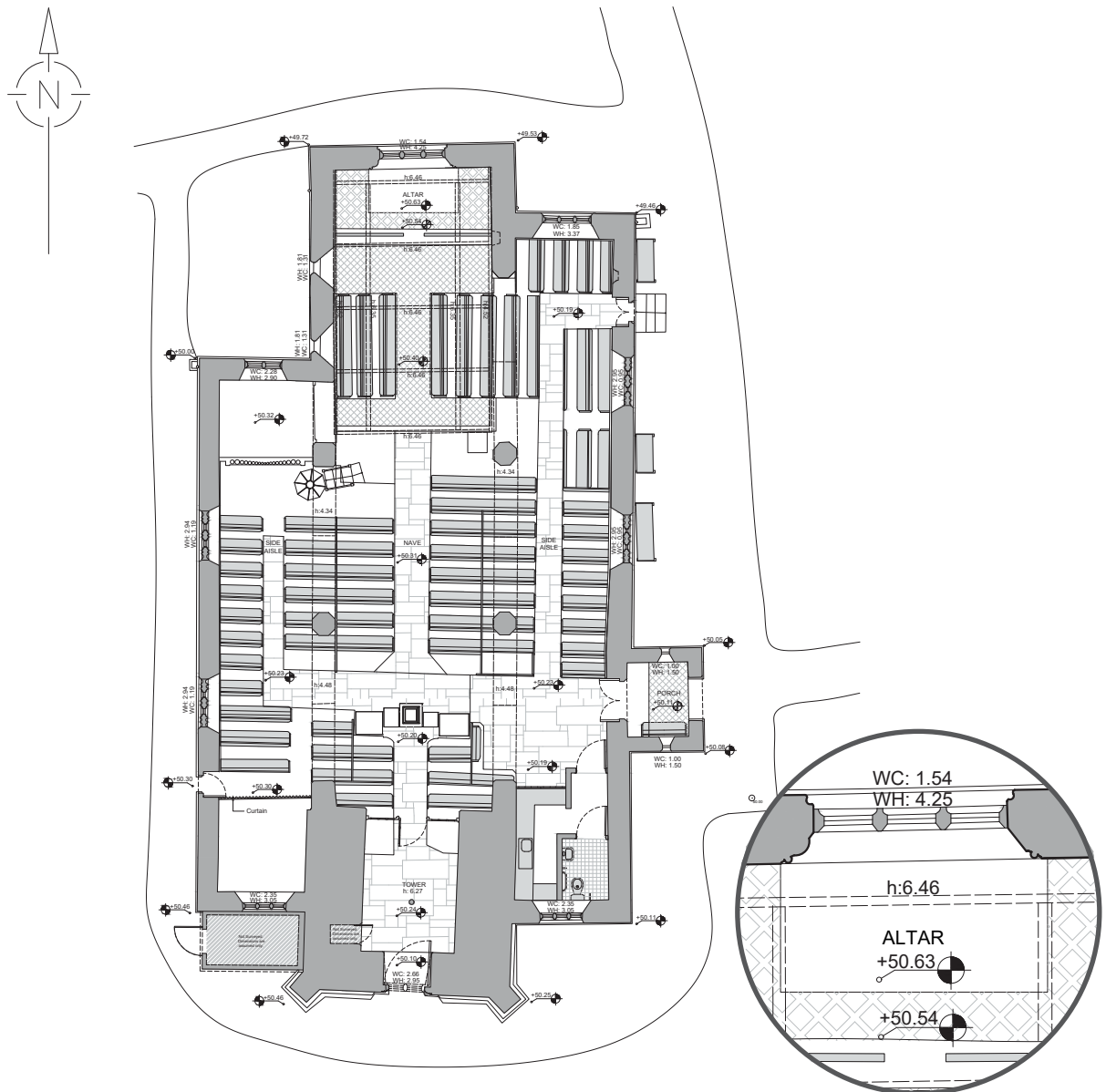
## Level 2 - Detailed Architecture

- These floor plans show featured architectural elements.
- The structural elements, windows, doors and openings are presented with featured details.
- Stairs, steps and rails show their key elements and featured details including stair paths
- Small-scale architectural elements show their featured details.
- Ornamental elements are not represented.
- Materials and finishes are not identified.
- Names of spaces are identified with annotations for measurements, heights and levels.



### Level 3 - Basic Ornamental

- These floor plans show all the detailed architectural elements and featured ornamental elements.
- Stairs, steps and rails are displayed with details including stair path.
- Featured decorative and ornamental elements are presented in detail.
- Fine line ornamental elements, such as sculptures and bas-reliefs elements, are not represented.
- The materials and finishes are represented by texture or notes, depending on the needs of our client.
- Names of spaces are identified with annotations for measurements, heights and levels.



## Level 4 - Detailed Ornamental

- These floor plans show in detail all the architectural elements and all ornamental elements.
- Stairs, steps and rails are displayed with details including stair paths.
- Featured decorative and ornamental elements are presented in detail.
- Fine line ornamental elements, such as sculptures and bas-reliefs elements, are represented in detail.
- The materials and finishes are represented by texture or notes, depending on the needs of our client.
- Names of spaces are identified with annotations for measurements, heights and levels.



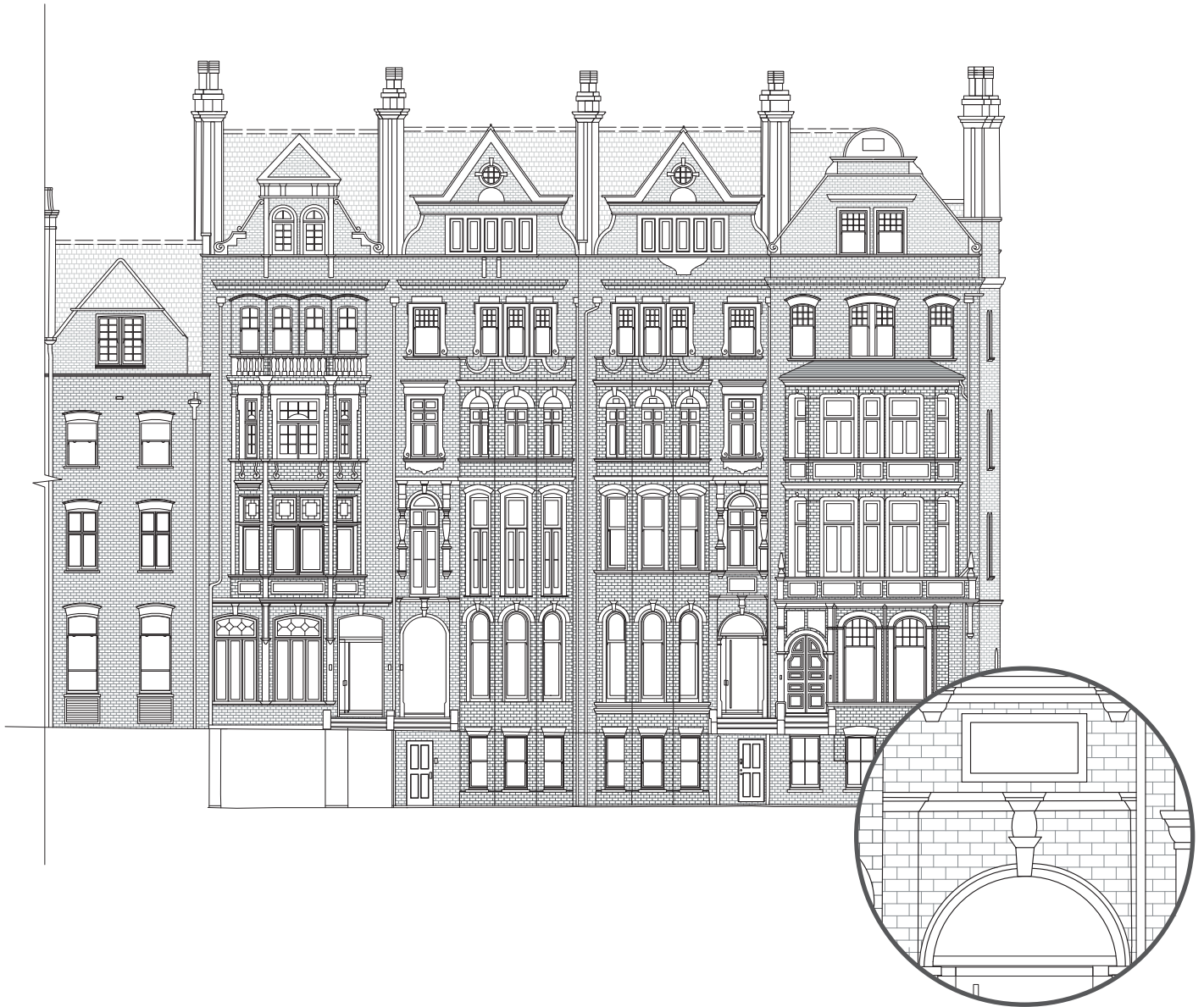
## Level 1 - Basic Architecture

- These elevations show all the elements in basic outlines.
- The structural elements are represented schematically.
- Doors and windows are represented as openings, without details.
- Includes the outline of stairs, steps and railings schematically.
- Ornamental elements and small-scale details are not included in the drawing.
- We draw simplified silhouettes of complex architectural elements.
- Moldings and cornices are represented with their schematic silhouettes.
- Materials and finishes are not identified.



## Level 2 - Detailed Architecture

- These elevations show featured architectural elements.
- The structural elements, windows, doors and openings are presented with featured details.
- Stairs, steps and rails show their key elements and featured details.
- Small-scale architectural elements show their featured details.
- Moldings and cornices are represented with their key elements and featured details.
- Ornamental elements are not represented.
- Materials and finishes are not identified.



## Level 3 - Basic Ornamental

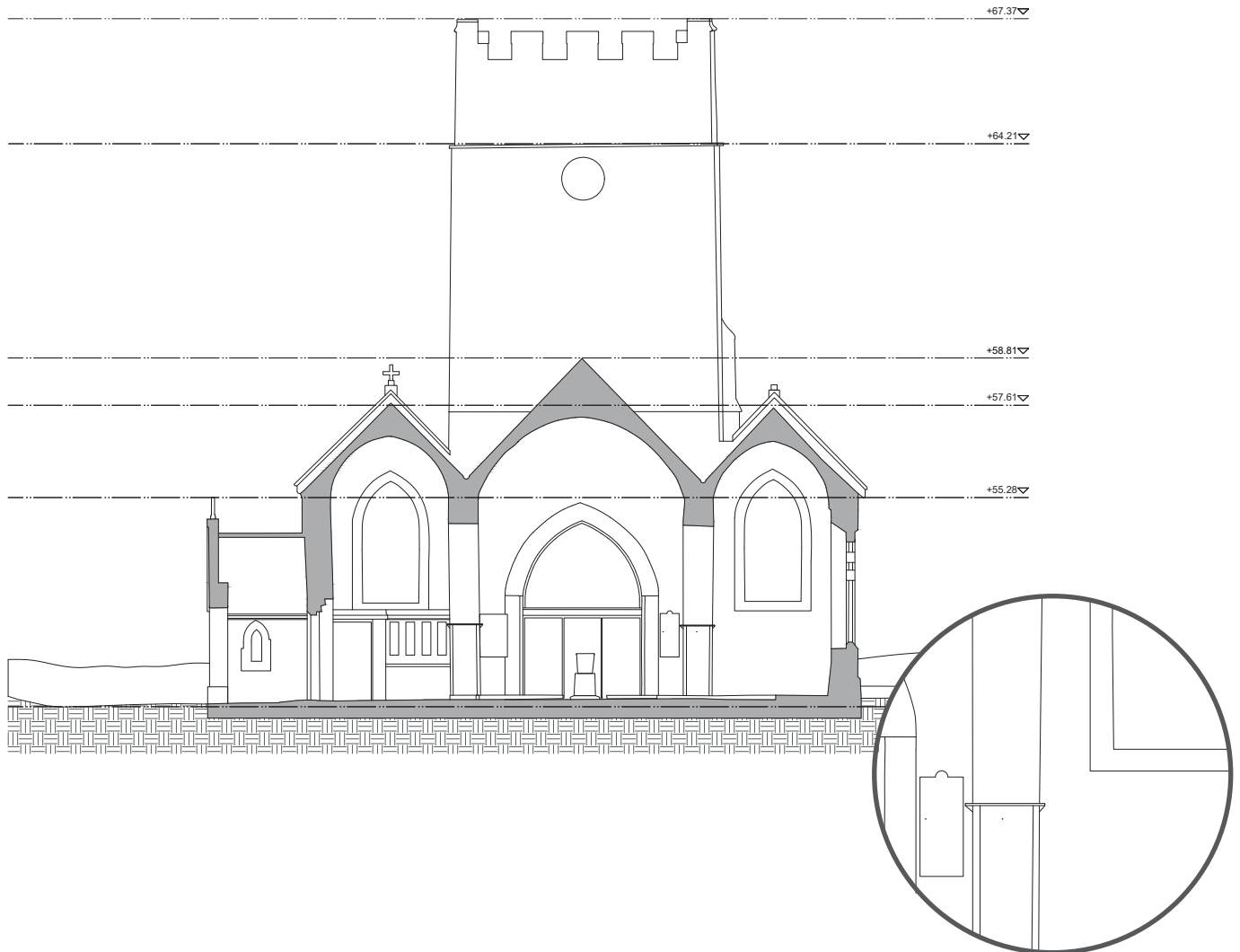
- These elevations show all the detailed architectural elements and featured ornamental elements.
- Stairs, steps and rails are displayed with details.
- Featured decorative and ornamental elements are presented in detail.
- Fine line ornamental elements, such as sculptures and bas-reliefs elements, are not represented.
- The materials and finishes are represented by texture or notes, depending on the needs of our client.





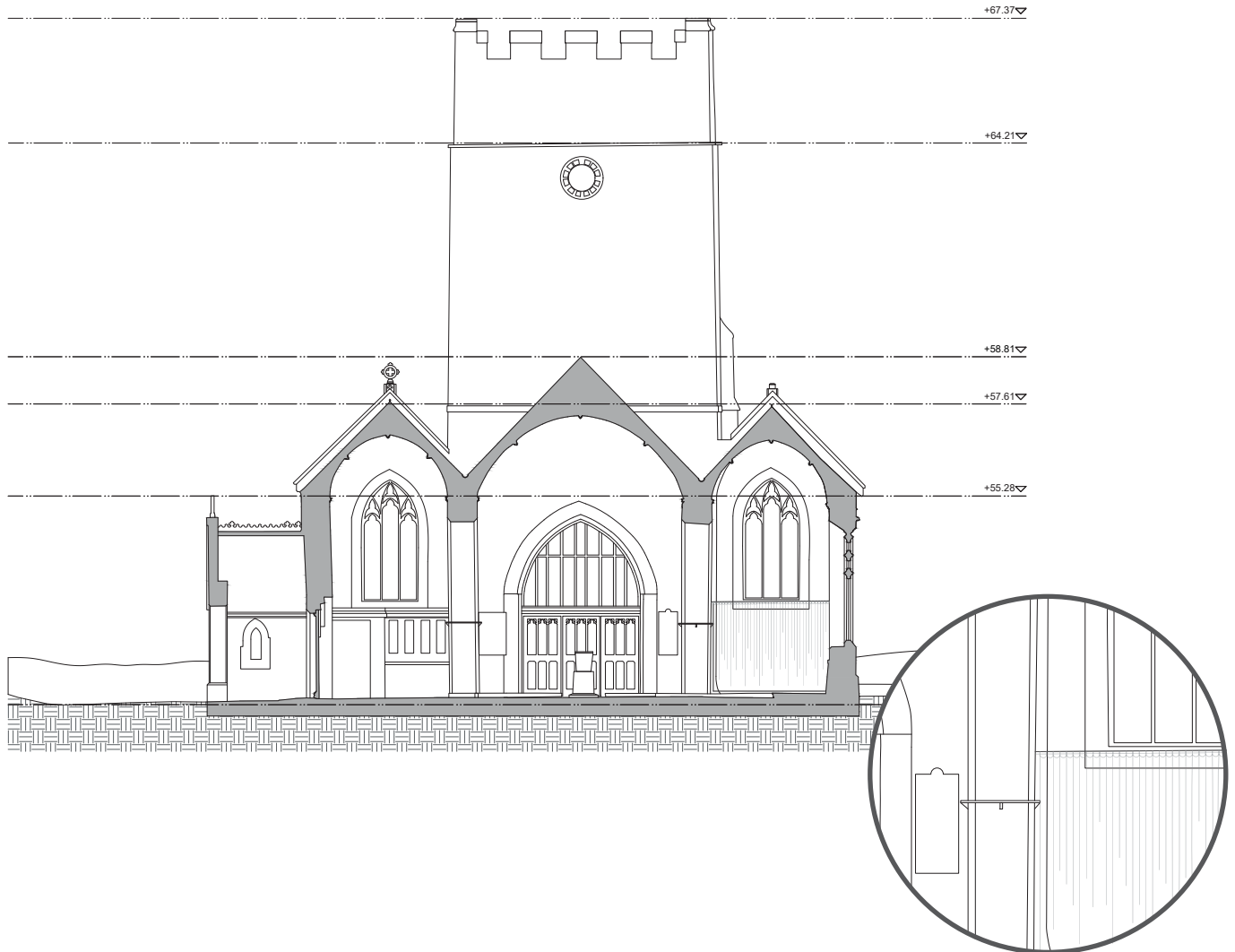
## Level 4 - Detailed Ornamental

- These elevations show in detail all the architectural elements and all ornamental elements.
- Stairs, steps and rails are displayed with details.
- Featured decorative and ornamental elements are presented in detail.
- Fine line ornamental elements, such as sculptures and bas-reliefs elements, are represented in detail.
- The materials and finishes are represented by texture or notes, depending on the needs of our client.



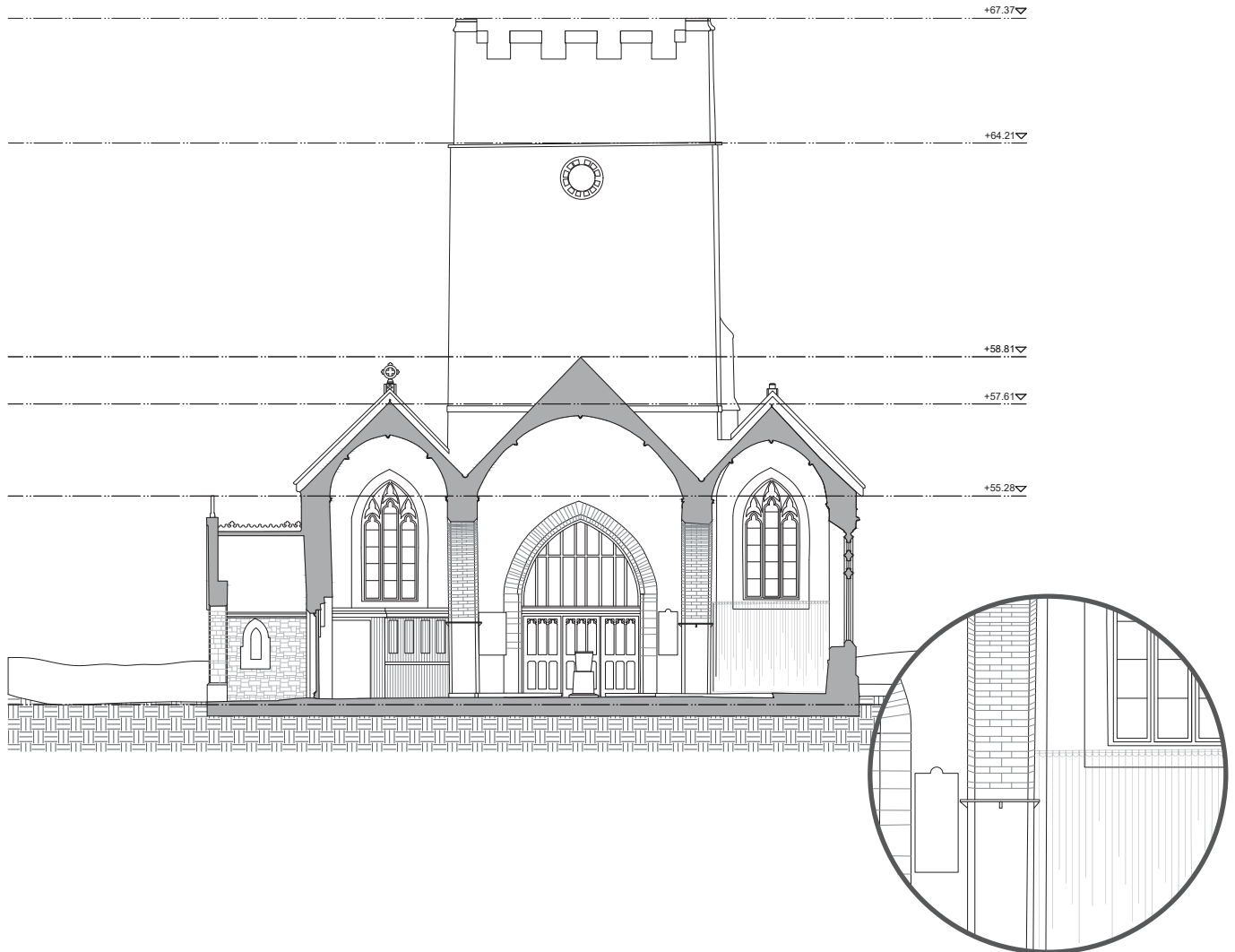
## Level 1 - Basic Architecture

- These sections show all the elements in basic outlines.
- The structural elements are represented schematically, in the case of being cut by the section plane they will be filled with a solid hatch.
- Doors and windows are represented as openings, without details.
- Includes the outline of stairs, steps and railings schematically.
- Ornamental elements and small-scale details are not included in the drawing.
- We draw simplified silhouettes of complex architectural elements.
- Moldings and cornices are represented with their schematic silhouettes.
- Materials and finishes are not identified.



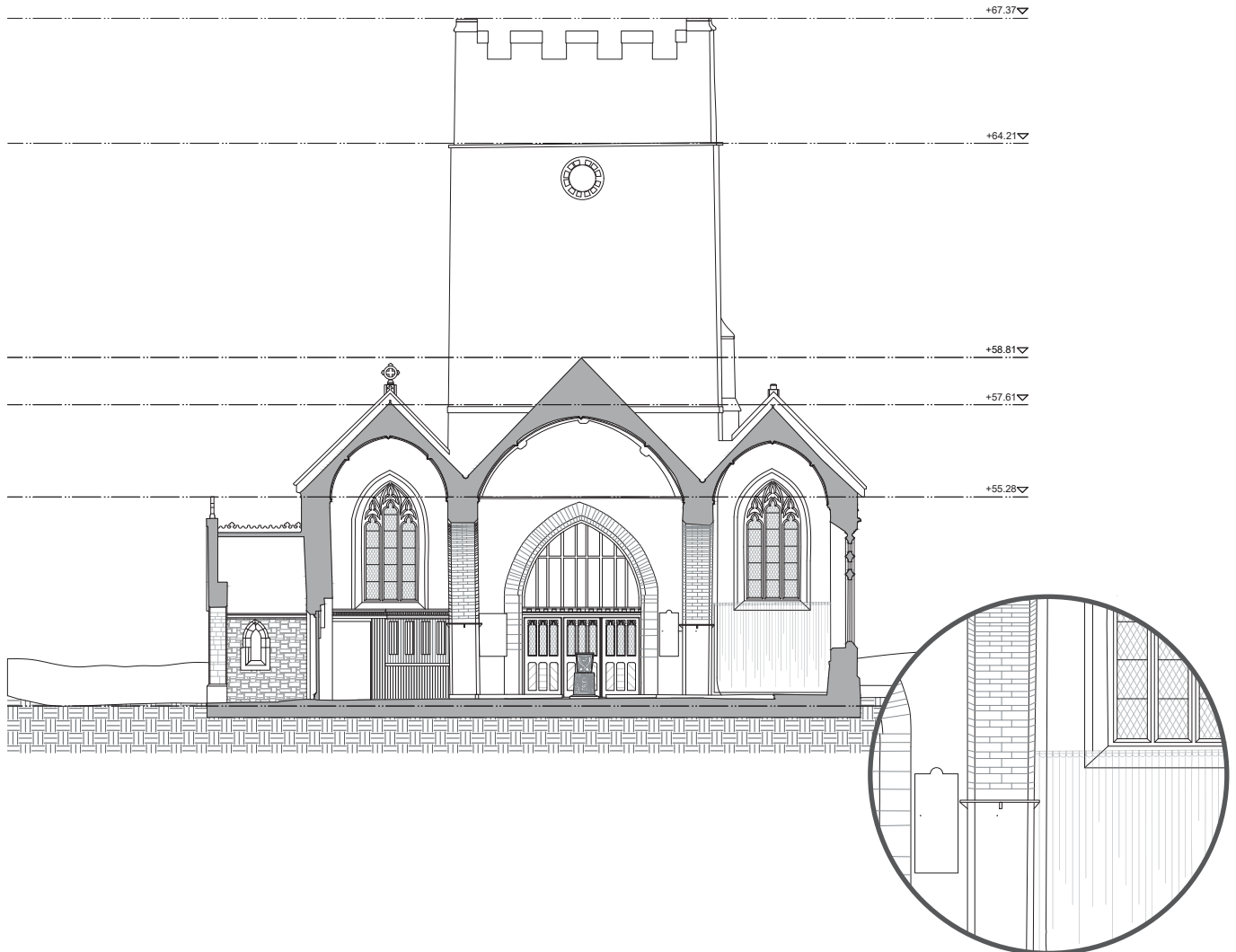
## Level 2 - Detailed Architecture

- These sections show featured architectural elements.
- The structural elements, windows, doors and openings are presented with featured details, in the case of being cut by the section plane they will be filled with a solid hatch.
- Stairs, steps and rails show their key elements and featured details.
- Small-scale architectural elements show their featured details.
- Moldings and cornices are represented with their key elements and featured details.
- Ornamental elements are not represented.
- Materials and finishes are not identified.



## Level 3 - Basic Ornamental

- These sections show all the detailed architectural elements and featured ornamental elements.
- Stairs, steps and rails are displayed with details, in the case of being cut by the section plane they will be filled with a solid hatch.
- Featured decorative and ornamental elements are presented in detail.
- Fine line ornamental elements, such as sculptures and bas-reliefs elements, are not represented.
- The materials and finishes are represented by texture or notes, depending on the needs of our client.



## Level 4 - Detailed Ornamental

- These elevations show in detail all the architectural elements and all ornamental elements.
- All of the elements cut by the section plane they will be filled with a solid hatch.
- Stairs, steps and rails are displayed with details.
- Featured decorative and ornamental elements are presented in detail.
- Fine line ornamental elements, such as sculptures and bas-reliefs elements, are represented in detail.
- The materials and finishes are represented by texture or notes, depending on the needs of our client.